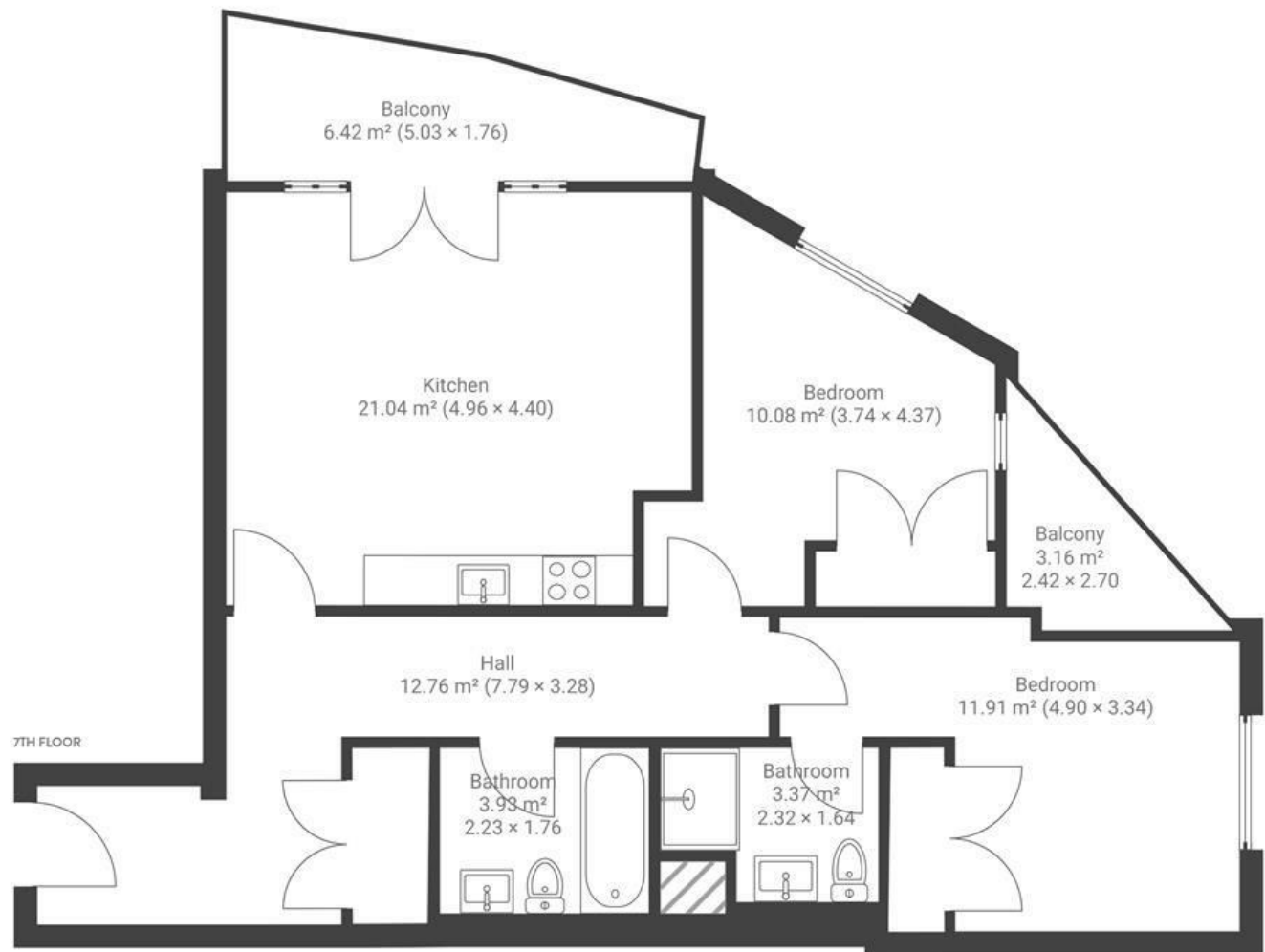


Eclipse

CITY CENTRE

APPROXIMATE FLOOR AREA
81.7 SQM / 879 SQFT



Boardwalk

Broad Weir

, BRISTOL

£

£320,000



BS1 3DH

zzz

2 Bedrooms



2 Bathrooms

"Being my first ever home, it will always carry a sense of nostalgia. It's felt like my own calm corner in the middle of the city, where I've spent many sunny evenings on the balcony or in the living room with a glass of wine, taking in the fantastic city views. I'll especially miss the golden sunlight filling the rooms on summer evenings."

